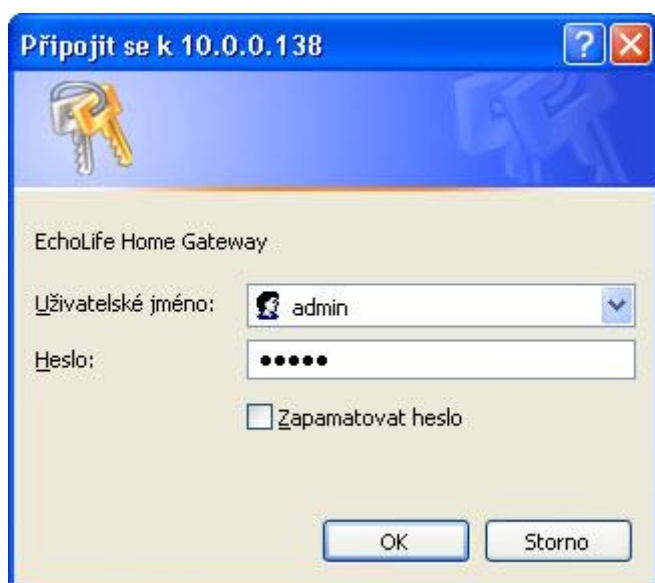


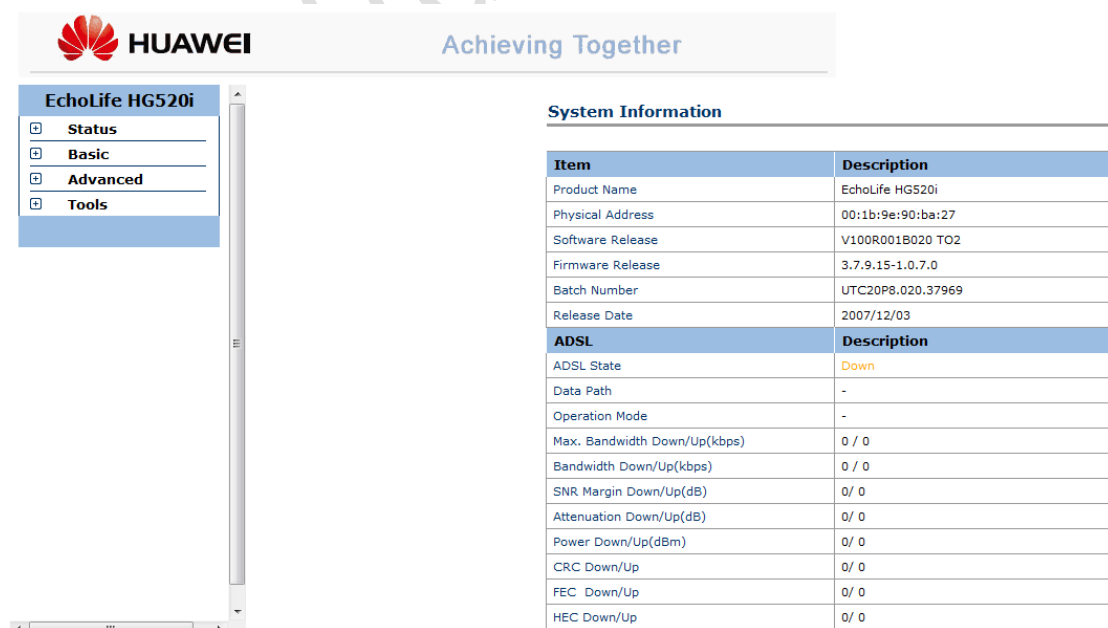
Nastavení modemu Huawei EchoLife HG 520i – změna jména a hesla

1. Otevřete si internetový prohlížeč (např. Internet Explorer, Operu atd.)
2. Do pole adresy zadejte **10.0.0.138**
3. Budete vyzváni k zadání přihlašovacího jména a hesla viz obrázek č.1
4. Zadejte jméno **admin** a heslo (pokud nebylo měněno, také **admin**) a klikněte na tlačítko **OK**



Obrázek č. 1

Otevře se okno viz obrázek č.2



Item	Description
Product Name	EchoLife HG520i
Physical Address	00:1b:9e:90:ba:27
Software Release	V100R001B020 TO2
Firmware Release	3.7.9.15-1.0.7.0
Batch Number	UTC20P8.020.37969
Release Date	2007/12/03
ADSL	Description
ADSL State	Down
Data Path	-
Operation Mode	-
Max. Bandwidth Down/Up(kbps)	0 / 0
Bandwidth Down/Up(kbps)	0 / 0
SNR Margin Down/Up(dB)	0/ 0
Attenuation Down/Up(dB)	0/ 0
Power Down/Up(dBm)	0/ 0
CRC Down/Up	0/ 0
FEC Down/Up	0/ 0
HEC Down/Up	0/ 0

Obrázek č.2

V levém menu klikněte na odkaz **Basic** viz obrázek č.3

The screenshot shows the Huawei EchoLife HG520i web interface. The left sidebar contains a menu with the following items: Status, Basic (highlighted with a red box), ADSL Mode, WAN Setting, LAN Setting, DHCP, NAT, IP Route, Wireless Lan, ATM Traffic, Advanced, and Tools. The main content area displays the 'System Information' table.

Item	Description
Product Name	EchoLife HG520i
Physical Address	00:1b:9e:90:ba:27
Software Release	V100R001B020 TO2
Firmware Release	3.7.9.15-1.0.7.0
Batch Number	UTC20P8.020.37969
Release Date	2007/12/03
ADSL	Description
ADSL State	Down
Data Path	-
Operation Mode	-
Max. Bandwidth Down/Up(kbps)	0 / 0
Bandwidth Down/Up(kbps)	0 / 0
SNR Margin Down/Up(dB)	0/ 0
Attenuation Down/Up(dB)	0/ 0
Power Down/Up(dBm)	0/ 0
CRC Down/Up	0/ 0
FEC Down/Up	0/ 0
HEC Down/Up	0/ 0

Obrázek č.3

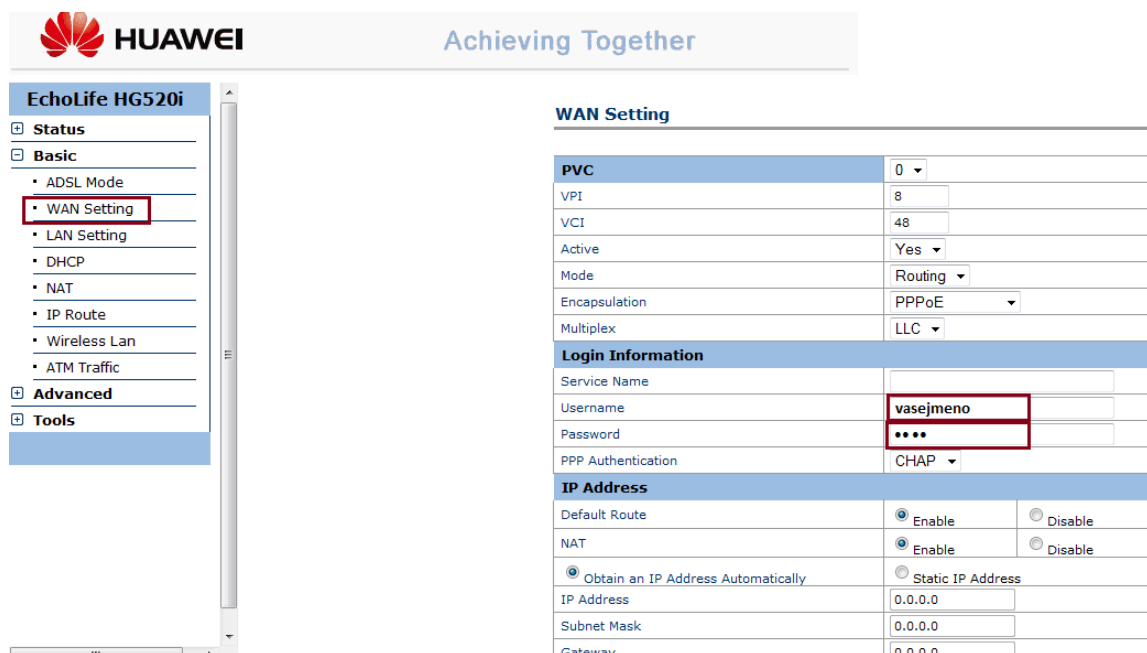
V rozbalené nabídce menu klikněte na odkaz **WAN Setting** viz obrázek č.4

The screenshot shows the Huawei EchoLife HG520i web interface. The left sidebar contains a menu with the following items: Status, Basic, ADSL Mode, WAN Setting (highlighted with a red box), LAN Setting, DHCP, NAT, IP Route, Wireless Lan, ATM Traffic, Advanced, and Tools. The main content area displays the 'WAN Setting' configuration page.

WAN Setting	
PVC	0
VPI	8
VCI	48
Active	Yes
Mode	Routing
Encapsulation	PPPoE
Multiplex	LLC
Login Information	
Service Name	
Username	O2
Password	••
PPP Authentication	CHAP
IP Address	
Default Route	<input checked="" type="radio"/> Enable <input type="radio"/> Disable
NAT	<input checked="" type="radio"/> Enable <input type="radio"/> Disable
	<input checked="" type="radio"/> Obtain an IP Address Automatically <input type="radio"/> Static IP Address
IP Address	0.0.0.0
Subnet Mask	0.0.0.0
Gateway	0.0.0.0

Obrázek č.4

Do pole **Username** vyplňte uživatelské jméno a do pole **Password** uživatelské heslo které jste obdrželi při aktivaci služby viz obrázek č.5.



HUAWEI Achieving Together

EchoLife HG520i

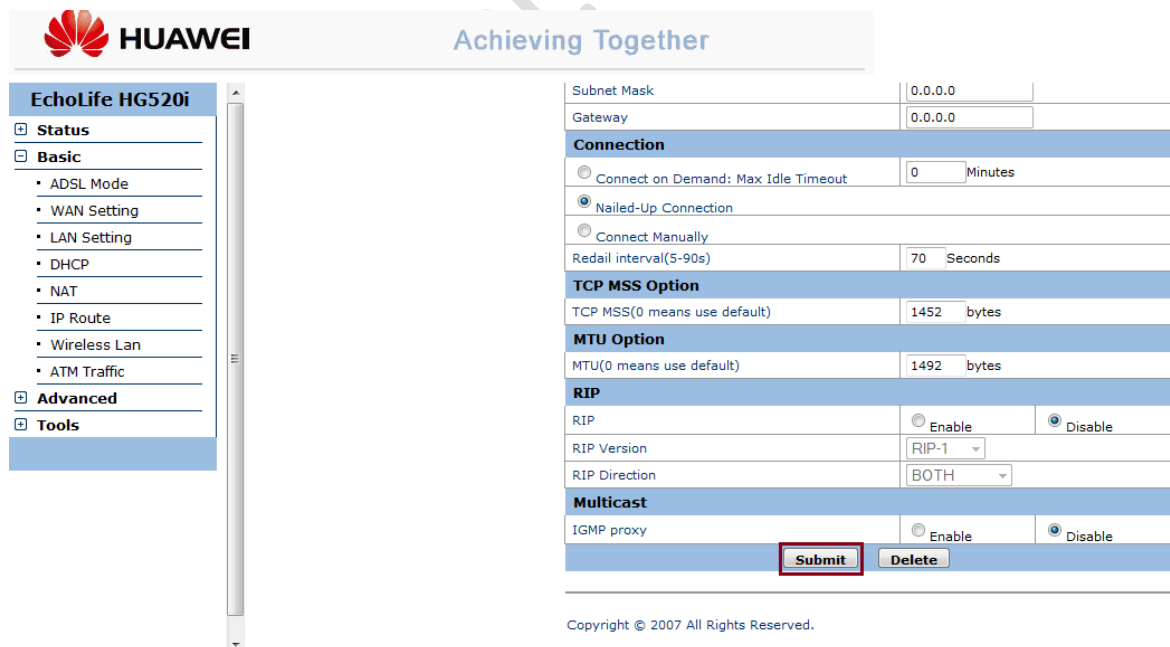
- Status
- Basic
 - ADSL Mode
 - WAN Setting**
 - LAN Setting
 - DHCP
 - NAT
 - IP Route
 - Wireless Lan
 - ATM Traffic
- Advanced
- Tools

WAN Setting

PVC	0
VPI	8
VCI	48
Active	Yes
Mode	Routing
Encapsulation	PPPoE
Multiplex	LLC
Login Information	
Service Name	
Username	vasejmeno
Password
PPP Authentication	CHAP
IP Address	
Default Route	<input checked="" type="radio"/> Enable <input type="radio"/> Disable
NAT	<input checked="" type="radio"/> Enable <input type="radio"/> Disable
<input checked="" type="radio"/> Obtain an IP Address Automatically	<input type="radio"/> Static IP Address
IP Address	0.0.0.0
Subnet Mask	0.0.0.0
Gateway	0.0.0.0

Obrázek č.5

Dole na stránce klikněte na tlačítko **Submit** viz obrázek č.6



HUAWEI Achieving Together

EchoLife HG520i

- Status
- Basic
 - ADSL Mode
 - WAN Setting
 - LAN Setting
 - DHCP
 - NAT
 - IP Route
 - Wireless Lan
 - ATM Traffic
- Advanced
- Tools

Subnet Mask	0.0.0.0
Gateway	0.0.0.0
Connection	
<input type="radio"/> Connect on Demand: Max Idle Timeout	0 Minutes
<input checked="" type="radio"/> Nailed-Up Connection	
<input type="radio"/> Connect Manually	
Redial interval(5-90s)	70 Seconds
TCP MSS Option	
TCP MSS(0 means use default)	1452 bytes
MTU Option	
MTU(0 means use default)	1492 bytes
RIP	
RIP	<input type="radio"/> Enable <input checked="" type="radio"/> Disable
RIP Version	RIP-1
RIP Direction	BOTH
Multicast	
IGMP proxy	<input type="radio"/> Enable <input checked="" type="radio"/> Disable

Submit **Delete**

Copyright © 2007 All Rights Reserved.

Obrázek č.6

Synchronizace a autentizace modemu do sítě může trvat několik minut. V případě technických problémů nás kontaktujte na čísle 602 744 447.